

January 27, 2016

Mr. John Hecklau
Environmental Design and Research
217 Montgomery Street
Suite 1000
Syracuse, NY 13202

Reference: L-2015-011116-A

Subject: Jericho Rise Wind Farm Noise Impact Assessment
Updated Sound Contour Plots

Dear Mr. Hecklau:

We have received the latest site plans, as of January 27, 2016, for the Jericho Rise Wind Farm Project and have updated the noise model to reflect the current layout.

The most significant change involves the elimination of the six alternate units that were included, for conservatism, in all previous model iterations and that are still mentioned in latest assessment report (HAI Report 2015-062515-B, dated October 23rd, 2015). The alternate turbine locations were simply place holders in the event a turbine was moved from another location to one of the alternate spots. In the current model the sound contours and nominal impact thresholds for each design case are considerably contracted in the southwestern corner of the project area where 5 of the 6 alternate locations were. Obviously, the anticipated noise impact in that area is considerably reduced by the removal of the alternate units.

Although some of the other units moved slightly, none of the shifts has significantly changed the sound level at any residence; consequently, the expected noise impact described in the assessment report for the ‘conservative’ and ‘typical’ design cases remains the same along with all of our general conclusions. In addition, the updated layout continues to demonstrate compliance with the local noise limit of 50 dBA at all non-participating residences.

This letter may be considered an addendum to Report 2015-062515-B.

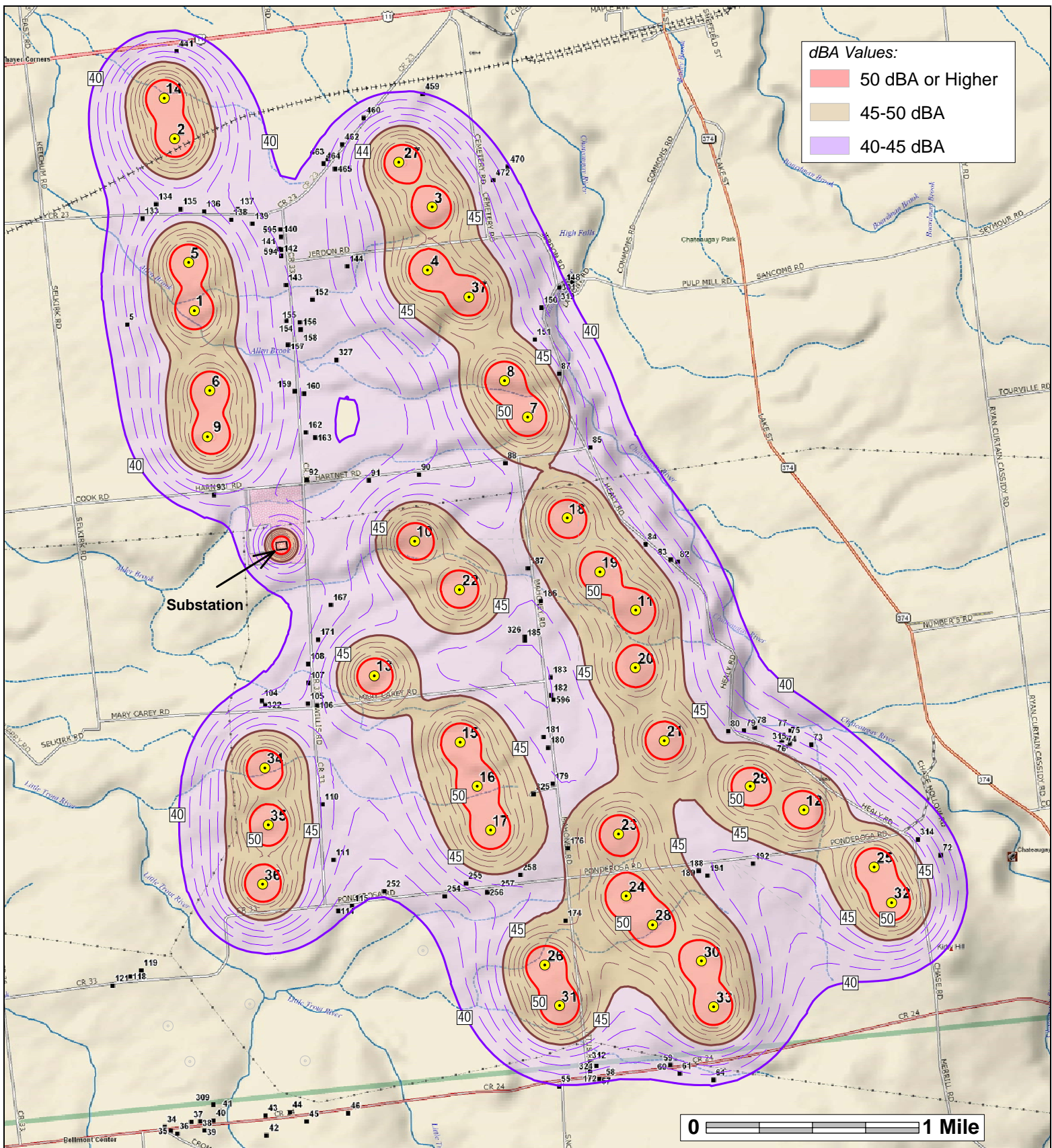
Of course, let me know if you have any questions or need any further information.

Sincerely,



David M. Hessler, P.E., INCE
Principal Consultant
Hessler Associates, Inc.

Attachments: **Plot 1** – “Conservative” Impact Threshold, Revised 1/27/16
 Plot 2 – “Typical” Impact Threshold, Revised 1/27/16
 Plot 3 – 50 dBA Contour, Revised 1/27/16

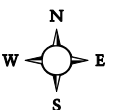


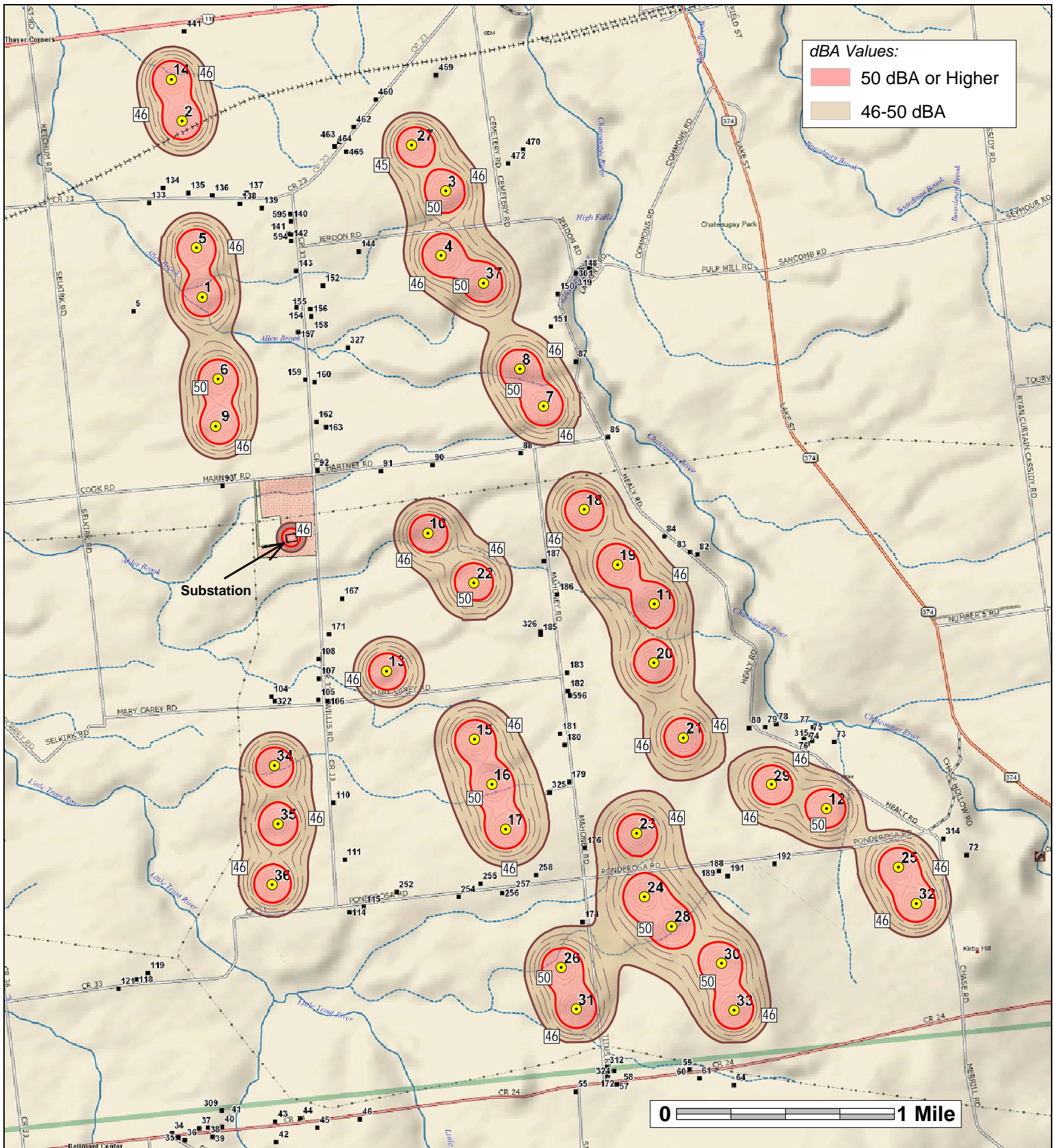
Project: Jericho Rise	Description: Plot 1	Legend: Turbine Location Non-Participating Residence
Prepared for: EDR	Predicted Sound Contours (dBA) Plotted to "Conservative" Impact Threshold of 40 dBA. All Units Operating Under 6 m/s Wind Conditions.	
Date: January 27, 2016	Drawing #: JR-Rev-H-1-1-1	



Hessler Associates, Inc.
WORLDWIDE CONSULTING IN ENGINEERING ACOUSTICS

3862 Clifton Manor Place, Suite B
Haymarket VA, 20169
www.hesslernoise.com
(703) 753-2291 (703) 753-1602





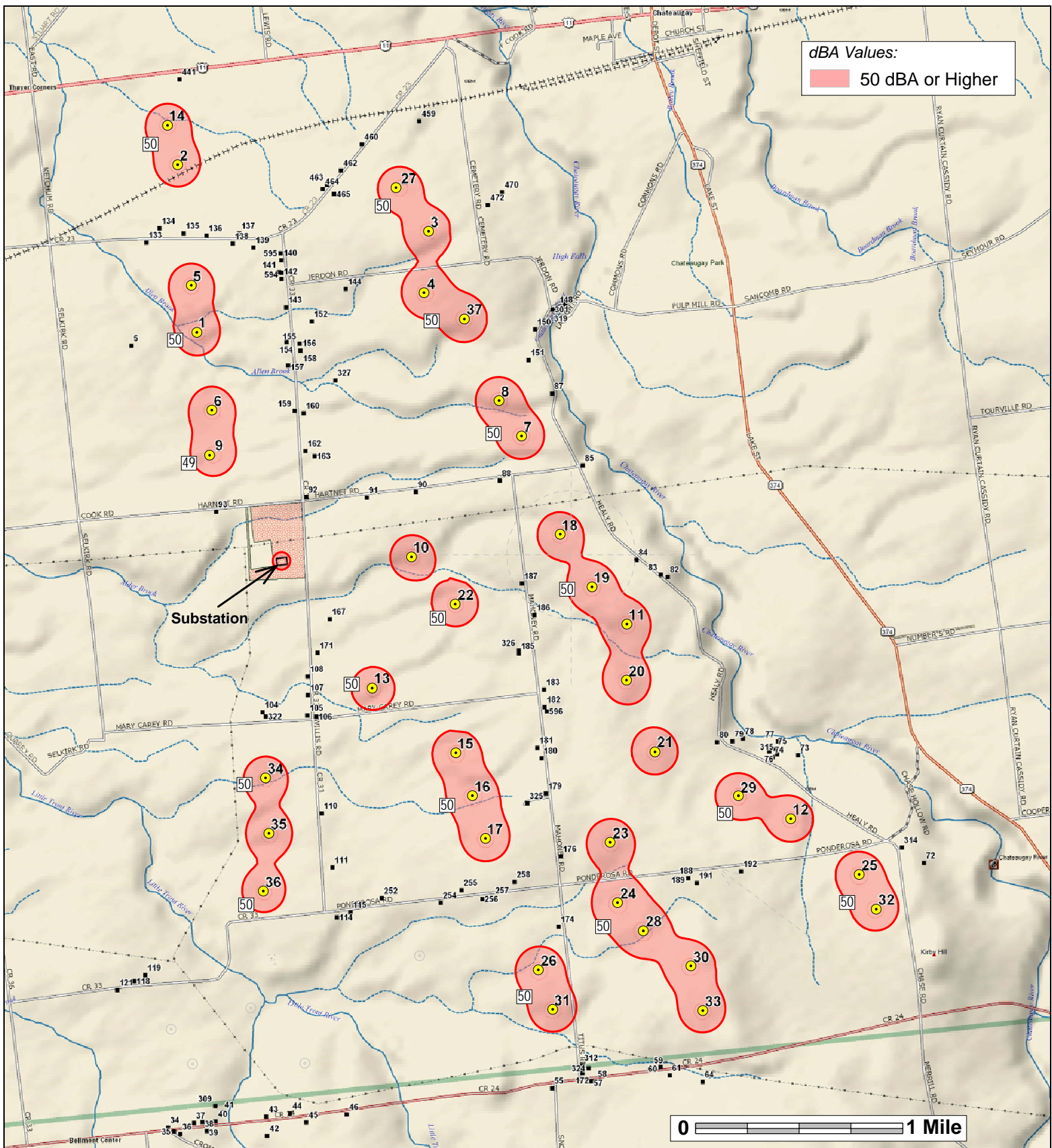
Project: Jericho Rise	Description: Plot 2	Legend:
Prepared for: EDR	Predicted Sound Contours (dBA) Plotted to "Typical" Impact Threshold of 46 dBA.	Turbine Location Non-Participating Residence
Date: January 27, 2016	Drawing #: JR-Rev-H-1-2-1	All Units Operating Under 6 m/s Wind Conditions.



Hessler Associates, Inc.
 WORLDWIDE CONSULTING IN ENGINEERING ACOUSTICS

3862 Clifton Manor Place, Suite B
 Haymarket VA, 20169
 www.hesslernoise.com
 (703) 753-2291 (703) 753-1602





Project: Jericho Rise	Description: Plot 3	Legend: Turbine Location Non-Participating Residence
Prepared for: EDR	Predicted Sound Contours (dBA) Plotted to Local Regulatory Limit of 50 dBA. All Units Operating Under 7 m/s Wind Conditions.	
Date: January 27, 2016	Drawing #: JR-Rev-H-1-3	



Hessler Associates, Inc.
 WORLDWIDE CONSULTING IN ENGINEERING ACOUSTICS

3862 Clifton Manor Place, Suite B
 Haymarket VA, 20169
 www.hesslernoise.com
 (703) 753-2291 (703) 753-1602

