



Memo

Project No. 2637A

To: Kaitlyn McGlade (NDMNRF)
From: Kayla Mimms (NRSI)
Date: April 4, 2022
Re: Nation Rise Wind Farm: Mortality Monitoring Turbine Subset Selection

Natural Resource Solutions Inc. (NRSI) was retained to conduct certain operational monitoring components for the Nation Rise Wind Farm (Project), in accordance with the Renewable Energy Approvals regulation, Ontario Regulation (O. Reg.) 359/09. The Project is located in the Township of North Stormont, Ontario and consists of 29 turbines with a total nameplate capacity of 100MW.

In accordance with the Renewable Energy Approval (REA) granted on May 4, 2018 (No. 0871-AV3TFM), the Project must implement post-construction bird and bat mortality monitoring, as described in the EEMP, at a minimum subset of 10 turbines, including at turbine T46, if it is constructed. A subset of 10 turbines was approved as part of the EEMP, with an understanding that it may require adjustment based on the as-built Project layout, including adjustments in consideration of turbines that were not built and/or the results of pre-construction surveys which may inform the selection of turbines in proximity to Significant Wildlife Habitats.

This memo has been prepared to provide the Ministry of Northern Development, Mines, Natural Resources and Forestry (NDMNRF) with the proposed turbine subset selection for post-construction bird and bat mortality monitoring required at the Project in accordance with the REA.

EEMP Turbine Subset Selection

In accordance with provincial guidelines, the 10 turbines selected for post-construction bird and bat mortality monitoring must consider factors such as geographic representation, proximity to natural features, and proximity to Significant Wildlife Habitats. In consideration of the constructed layout and other site-specific conditions, NRSI has used these selection criteria to make proposed revisions to the turbine subset selection that was presented in the EEMP, as summarized in the table below and shown on Map 1.

Original Subset	New Monitoring Subset	Rationale
T04	T04	<ul style="list-style-type: none">No change
T10	T10	<ul style="list-style-type: none">No change
---	T16	<ul style="list-style-type: none">Added; similar geography to T58, which wasn't constructed
T18	T18	<ul style="list-style-type: none">No change
---	T21	<ul style="list-style-type: none">Added; similar geography to T25, which is no longer proposed in the subset

Original Subset	New Monitoring Subset	Rationale
T25	---	<ul style="list-style-type: none"> • Removed; not a preferred turbine for regular searches
T27	---	<ul style="list-style-type: none"> • Removed; not a preferred turbine for regular searches
---	T29	<ul style="list-style-type: none"> • Added; similar geography to T27, which is no longer proposed in the subset
---	T35	<ul style="list-style-type: none"> • Added; similar geography to T43, which wasn't constructed
T43	---	<ul style="list-style-type: none"> • Removed; not constructed
T46	T46	<ul style="list-style-type: none"> • No change
---	T48	<ul style="list-style-type: none"> • Added; nearby to a similar Significant Wildlife Habitat as T27, which is not a preferred turbine
T54	T54	<ul style="list-style-type: none"> • No change
T57	---	<ul style="list-style-type: none"> • Removed; near a habitat that was confirmed <u>not</u> Significant Wildlife Habitat
T58	---	<ul style="list-style-type: none"> • Removed; not constructed

Despite minor changes to the subset that was approved in the EEMP, the revised monitoring subset has been selected to maintain similar geographic representation across the Project, similar proximity to landscape features (e.g., wooded habitat, open agriculture, etc.), and similar proximity to Significant Wildlife Habitats, as compared with the subset selection that was initially provided in the approved EEMP.

After reviewing the attached map and selected turbine subset, NRSI requests confirmation from the NDMNRF regarding the chosen EEMP subset.

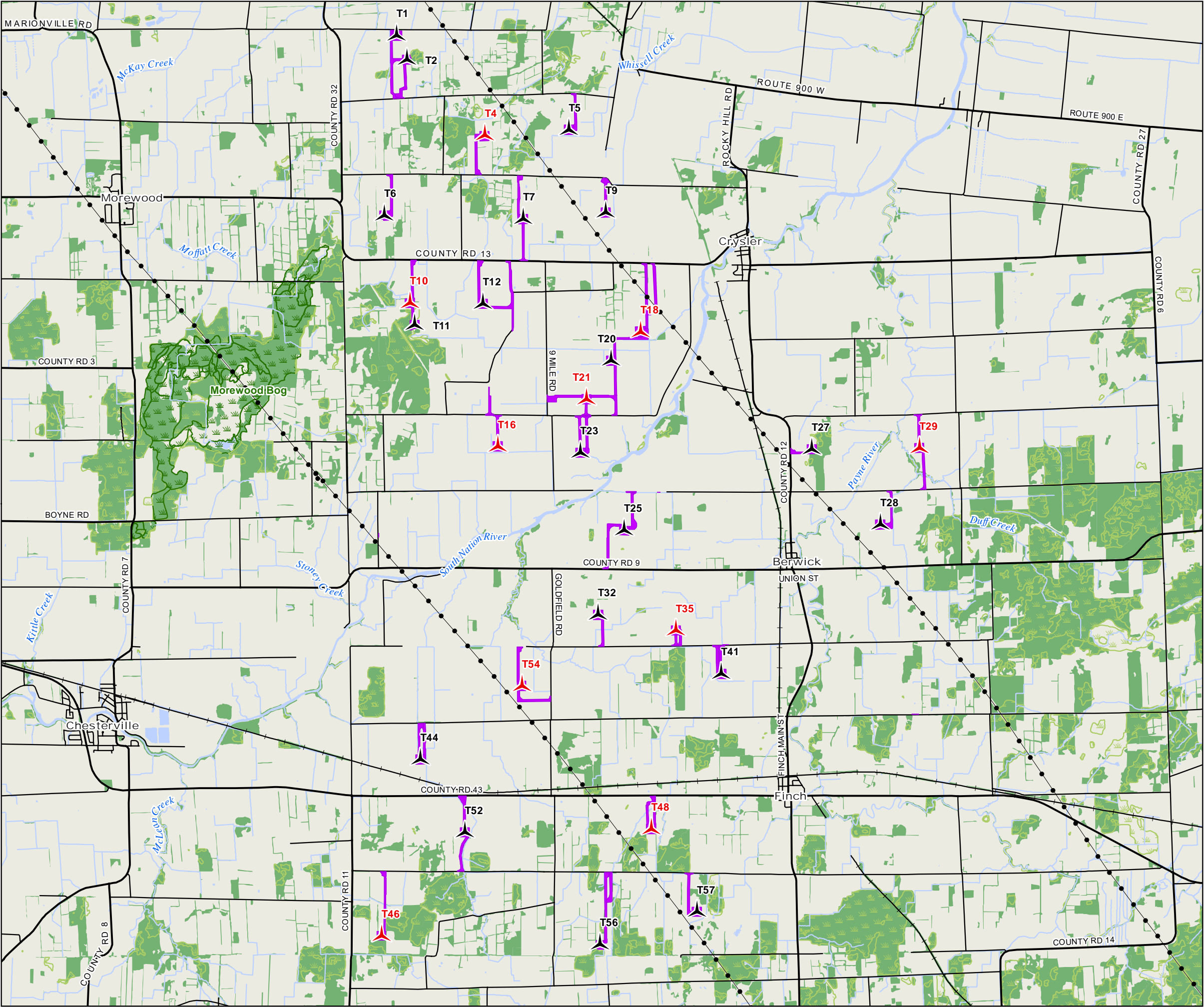
Should you have any questions or comments regarding this memo, please do not hesitate to contact the undersigned.

Best Regards,



Kayla Mimms
Terrestrial and Wetland Biologist
Natural Resource Solutions Inc.

Map 1
Mortality Monitoring Turbines



Path: X:\1756_Nation_Rise_Wind_Project\NRSI_1756_Map1_MortalityMonitoringTurbines_70K_2022_04_05_JX.mxd

Map 1

Nation Rise Wind Farm

Mortality Monitoring Turbines

Legend

Turbine (Twice-weekly)

Turbine (Monthly)

Proposed Access Road

Utility Line

Railway

Primary Road

Secondary Road

Permanent Watercourse (LIO)

Intermittent Watercourse (LIO)

Open Water (LIO)

Wooded Area (LIO)

Provincially Significant Wetland (PSW) (LIO)

Unevaluated Wetland (LIO)

NATURAL RESOURCE SOLUTIONS INC.
Aquatic, Terrestrial and Wetland Biologists

Map Produced by Natural Resource Solutions Inc. This map is proprietary and confidential and must not be duplicated or distributed by any means without express written permission of NRSI. Data provided by Land Information Ontario (LIO), MNRF©
Copyright: Queen's Printer Ontario.

Project: 2637B
Date: April 5, 2022

NAD83 - UTM Zone 18
Size: 11x17"
1:68,000

01234 Kilometers